

Rail manufacturer



Type of rail	Size	Type of carriage	Item number	Measure D [mm]	Measure table [page 117]
RSR, RSH	5	RSR..M, RSR..N	⊙	6	
	7	RSR..M, RSH..M, RSR..N	HK 0700 M	8	1
	9	RSR..KM, RSH..KM, RSR..N	HK 0900 M	10	2
	12	RSR..KM, RSH..VM, RSR..N	⊙	13	
	15	RSR..VM, RSR..N	HK 1500 M	16	4
	20	RSR..VM, RSR..N	HK 2000 M	25	6
SRS..M	9	SRS..M	⊙	10	
	12	SRS..M	HK 1200 M	13	3
	15	SRS..M	⊙	16	
	20	SRS..M	HK 2000 M	20	5
	25	SRS..M	⊙	25	

Rail manufacturer



0445	7	0442..7, 0444..7	⊙	8	
	9	0442..9/ M3, 0442..9/M2, 0444..9/M3	HK 0900 M	10	2
	12	0442..12, 0444..12	HK 1200 M	13	3
	15	0442..15, 0444..15	HK 1500 M	16	4
	20	0442..20	HK 2000 M	25	6

Rail manufacturer



MN	7	MNN	⊙	8	
	9	MNN	HK 0900 M	10	2
	12	MNN	HK 1200 M	13	3
	15	MNN	HK 1500 M	16	4

Rail manufacturer



LWL	5	LWLC..B, LWLC..N, LWL..B, LWL..N	⊙	6	
	7	LWLC..B, LWLC..N, LWL..B, LWL..N, LWLG..B, LWLG..N	HK 0700 M	8	1
	9	LWLC..B, LWLC..N, LWL..B, LWL..N, LWL..BCS, LWLG..B, LWLG..N	HK 0900 M	10	2
	12	LWLC..B, LWL..B, LWL..BCS, LWLG..B,	HK 1200 M	13	3
	15	LWLC..B, LWL..B, LWL..BCS, LWLG..B,	HK 1500 M	16	4
	20	LWLC..B, LWL..B, LWL..BCS, LWLG..B,	⊙	20	
	25	LWLC..B, LWL..B, LWLG..B	⊙	25	

Rail manufacturer



TKDM	5	KWEM, KWEM..-C	⊙	6	
	7	KWEM, KWEM..-L, KWEM..-C	HK 0700 M	8	1
	9	KWEM, KWEM..-L, KWEM..-C	HK 0900 M	10	2
	12	KWEM, KWEM..-L, KWEM..-C	HK 1200 M	13	3
	15	KWEM, KWEM..-L, KWEM..-C	HK 1500 M	16	4

Rail manufacturer



LU	5	LU..TL, PU..TR	⊙	6	
	7	LU..AL, PU..AR	HK 0700 M	8	1
	9	LU..AR, LU..TR, LU..AL, LU..TL, LU..BL, LU..UL, PU..TR	HK 0900 M	10	2
	12	LU..AR, LU..TR, LU..AL, LU..TL, LU..BL, LU..UL, PU..TR	HK 1200 M	13	3
	15	LU..AL, LU..BL, PU..AL	HK 1500 M	16	4

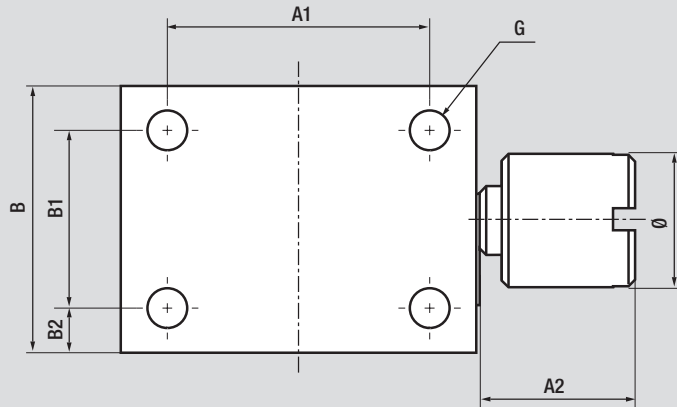
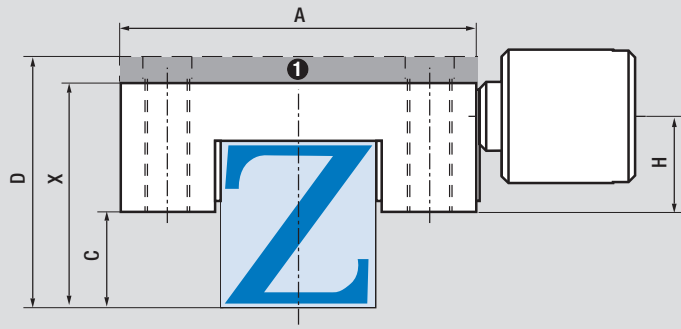
Rail manufacturer



MGN	7	MGN..C, MGN..H	HK 0700 M	8	1
	9	MGN..C, MGN..H	HK 0900 M	10	2
	12	MGN..C, MGN..H	HK 1200 M	13	3
	15	MGN..C, MGN..H	HK 1500 M	16	4

\*2 Supplements the measure table and datasheet

See page 12 for part number explanation



**Note:** Consider measurement C!

❶ adapting plate PHK (accessories)

Measure table	Holding power [N] Fastening torque [Nm]	A [mm]	A1 [mm]	A2 [mm]	B [mm]	B1 [mm]	B2 [mm]	C [mm]	X [mm]	G	Ø [mm]	H [mm]
1	65/0,15	17	12	7	12	8	2	2	8	M2	6	2,5
2	100/0,24	20	15	9	17	11	3	2,7	10	M3	8	3
3	150/0,50	27	20	10	19	13	3	3,5	13	M3	10	3,6
4	180/1,02	32	25	14	20	14	3	5	16	M3	12	4
5	220/1,8	46	38	19	26	19	3,5	5	20	M4	14	6
6	220/1,8	46	38	19	26	19	3,5	10	25	M4	14	6