



Type of rail	Size	Type of carriage	Item number	Adapting plate ^{*1} (for height compensation)	Measure D [mm]	Measure table ^{*2} (page 56)
HSR	25	HSR..A, HSR..LA, HSR..B, HSR..LB, HSR..CA, HSR..HA, HSR..CB, HSR..HB	⊗		36	4
		HSR..R, HSR..LR	⊗		40	
	30	HSR..A, HSR..LA, HSR..B, HSR..LB, HSR..CA, HSR..HA, HSR..CB, HSR..HB	UBPS 3001 AS1		42	3
		HSR..R, HSR..LR	UBPS 3001 AS1		45	
	35	HSR..A, HSR..LA, HSR..B, HSR..LB, HSR..CA, HSR..HA, HSR..CB, HSR..HB	UBPS 3501 AS1		48	6
		HSR..R, HSR..LR	UBPS 3501 AS1	PUB 35-7	55	
	45	HSR..A, HSR..LA, HSR..B, HSR..LB, HSR..CA, HSR..HA, HSR..CB, HSR..HB	UBPS 4501 AS1		60	9
		HSR..R, HSR..LR	UBPS 4501 AS1	PUB 4 5-10	70	
	55	HSR..A, HSR..LA, HSR..B, HSR..LB, HSR..CA, HSR..HA, HSR..CB, HSR..HB	⊗		70	
		HSR..R, HSR..LR	⊗		80	
65	HSR..A, HSR..LA, HSR..B, HSR..LB, HSR..R, HSR..LR, HSR..CA, HSR..HA, HSR..CB, HSR..HB	⊗		90		
NR/NRS	25	NR / NRS..XR, NR / NRS..XLR, NR / NRS..XA, NR / NRS..XLA, NR / NRS..XB, NR / NRS..XLB	⊗		31	
	30	NR / NRS..R, NR / NRS..LR, NR / NRS..A, NR / NRS..LA, NR / NRS..B, NR / NRS..LB	⊗		38	
	35	NR / NRS..R, NR / NRS..LR, NR / NRS..A, NR / NRS..LA, NR / NRS..B, NR / NRS..LB	UBPS 3501 BS1		44	7
45	NR / NRS..R, NR / NRS..LR, NR / NRS..A, NR / NRS..LA, NR / NRS..B, NR / NRS..LB	UBPS 4501 BS1		52	10	
55	NR / NRS..R, NR / NRS..LR, NR / NRS..A, NR / NRS..LA, NR / NRS..B, NR / NRS..LB	⊗		63		
65	NR / NRS..R, NR / NRS..LR, NR / NRS..A, NR / NRS..LA, NR / NRS..B, NR / NRS..LB	⊗		75		
SHS	25	SHS..C, SHS..LC, SHS..V, SHS..LV	⊗		36	
		SHS..R, SHS..LR	⊗		40	
	30	SHS..C, SHS..LC, SHS..V, SHS..LV	UBPS 3001 CS1		42	3
		SHS..R, SHS..LR	UBPS 3001 CS1	PUB 30-3	45	
	35	SHS..C, SHS..LC, SHS..V, SHS..LV	UBPS 3501 CS1		48	6
		SHS..R, SHS..LR	UBPS 3501 CS1	PUB 35-7	55	
	45	SHS..C, SHS..LC, SHS..V, SHS..LV	UBPS 4501 CS1		60	9
		SHS..R, SHS..LR	UBPS 4501 CS1	PUB 45-10	70	
	55	SHS..C, SHS..LC, SHS..V, SHS..LV	⊗		70	
		SHS..R, SHS..LR	⊗		80	
65	SHS..C, SHS..LC, SHS..V, SHS..LV	⊗		90		
SRG	25	SRG..C, SRG..LC	⊗		36	
		SRG..R, SRG..LR	⊗		40	
	30	SRG..C, SRG..LC	UBPS 3001 ES1		42	2
		SRG..R, SRG..LR	UBPS 3001 ES1	PUB 30-3	45	
	35	SRG..C, SRG..LC	UBPS 3501 ES1		48	5
		SRG..R, SRG..LR	UBPS 3501 ES1	PUB 35-7	55	
	45	SRG..C, SRG..LC	UBPS 4501 ES1		60	8
		SRG..R, SRG..LR	UBPS 4501 ES1	PUB 45-10	70	
	55	SRG..C, SRG..LC	UBPS 5501 ES1		70	4
		SRG..R, SRG..LR	UBPS 5501 ES1	PUB 55-10	80	
65	SRG..LC, SRG..LV	⊗		90		

^{*1} Only required for high carriage design
^{*2} Supplements the measure table and datasheet

See page 13 for part number explanation

Type of rail	Size	Type of carriage	Item number	Adapting plate ^{*1} (for height compensation)	Measure D [mm]	Measure table [page 56] ^{*2}
SNR/SNS	25	SNR..R, SNR..LR, SNR..C, SNR..LC, SNS..R, SNS..LR, SNS..C, SNS..LC	☉		31	
	30	SNR..R, SNR..LR, SNR..C, SNR..LC, SNS..R, SNS..LR, SNS..C, SNS..LC	☉		38	
	35	SNR..R, SNR..LR, SNR..C, SNR..LC, SNS..R, SNS..LR, SNS..C, SNS..LC	UBPS 3501 IS1		44	7
		SNR..CH, SNR..LCH, SNS..CH, SNS..LCH	☉		48	
		SNR..RH, SNR..LRH, SNS..RH, SNS..LRH	☉		55	
	45	SNR..R, SNR..LR, SNR..C, SNR..LC, SNS..R, SNS..LR, SNS..C, SNS..LC	UBPS 4501 IS1		52	10
		SNR..CH, SNR..LCH, SNS..CH, SNS..LCH	☉		60	
		SNR..RH, SNR..LRH, SNS..RH, SNS..LRH	☉		70	
	55	SNR..R, SNR..LR, SNR..C, SNR..LC, SNS..R, SNS..LR, SNS..C, SNS..LC	☉		63	
		SNR..CH, SNR..LCH, SNS..CH, SNS..LCH	☉		70	
		SNR..RH, SNR..LRH, SNS..RH, SNS..LRH	☉		80	
	65	SNR..R, SNR..LR, SNR..C, SNR..LC, SNS..R, SNS..LR, SNS..C, SNS..LC	☉		75	

Rail manufacturer



UB

1605, 1607, 1645, 1647	15	1622, 1623, 1631, 1632, 1651, 1653, 1661, 1662, 1665, 1666	☉			
	20	1622, 1623, 1651, 1653, 1661, 1662, 1665, 1666	☉			
	25	1622, 1623, 1631, 1632, 1651, 1653, 1661, 1662, 1665, 1666	UBPS 2505 AS1		36	1
		1621, 1624	UBPS 2505 AS1	PUB 25-4	40	
	30	1622, 1623, 1631, 1632, 1651, 1653, 1661, 1662, 1665, 1666	UBPS 3005 AS1		42	2
		1621, 1624	UBPS 3005 AS1	PUB 30-3	45	
	35	1622, 1623, 1631, 1632, 1651, 1653, 1661, 1662, 1665, 1666	UBPS 3505 AS1		48	5
		1621, 1624	UBPS 3505 AS1	PUB 35-7	55	
	45	1622, 1623, 1651, 1653	UBPS 4505 AS1		60	8
		1621, 1624	UBPS 4505 AS1	PUB 45-10	70	
55	1651, 1653	UBPS 5505 AS1		70	4	
	1621, 1624	UBPS 5505 AS1	PUB 55-10	80		
1805, 1807	25	1851, 1853	UBPS 2505 BS1		36	1
		1821, 1824	UBPS 2505 BS1	PUB 25-4	40	
	35	1851, 1853	UBPS 3505 BS1		48	5
		1821, 1824	UBPS 3505 BS1	PUB 35-7	55	
	45	1851, 1853	UBPS 4505 BS1		60	8
		1821, 1824	UBPS 4505 BS1	PUB 45-10	70	
	55	1851, 1853	UBPS 5505 BS1		70	4
		1821, 1824	UBPS 5505 BS1	PUB 55-10	80	
65	1853, 1824	☉		90		

Rail manufacturer



MR	25	MR..A, MR..B	☉		36	
		MR..C, MR..D, MR..E	☉		40	
	35	MR..A, MR..B	UBPS 3503 AS1		48	5
		MR..C, MR..D, MR..E	UBPS 3503 AS1	PUB 35-7	55	
	45	MR..A, MR..B	☉		60	
		MR..C, MR..D	☉		70	
	55	MR..A, MR..B	UBPS 5503 AS1		70	4
		MR..C, MR..D	UBPS 5503 AS1	PUB 55-10	80	
65	MR..B, MR..D	☉		90		

Rail manufacturer



^{*1} Only required for high carriage design

^{*2} Supplements the measure table and datasheet

See page 13 for part number explanation

Rail manufacturer



Type of rail	Size	Type of carriage	Item number	Adapting plate *1 (for height compensation)	Measure D [mm]	Measure table (page 56) *2
LWH	15	LWH..B, LWH..SL, LWH..M, LWHT..B, LWHT..SL, LWHT..M, LWHS..B, LWHS..SL, LWHS..M	☉		24	
		LWHD..B, LWHD..M, LWHY	☉		28	
	20	LWH..B, LWH..SL, LWH..M, LWHG, LWHT..B, LWHT..SL, LWHT..M, LWHTG, LWHS..B, LWHS..SL, LWHS..M, LWHSG, LWHY	☉		30	
		LWH..B, LWH..SL, LWH..M, LWHG, LWHT..B, LWHT..SL, LWHT..M, LWHTG, LWHS..B, LWHS..SL, LWHS..M, LWHSG	☉		36	
	25	LWHD..B, LWHD..M, LWHDG, LWHY	☉		40	
		LWH..B, LWH..SL, LWH..M, LWHG, LWHT..B, LWHT..SL, LWHT..M, LWHTG, LWHS..B, LWHS..SL, LWHS..M, LWHSG	UBPS 3010 AS1		42	3
	30	LWHD..B, LWHD..M, LWHDG, LWHY	UBPS 3010 AS1	PUB 30-3	45	
		LWH..B, LWH..M, LWHG, LWHT..B, LWHT..M, LWHTG	UBPS 3510 AS1		48	6
	35	LWHD..B, LWHD..M, LWHDG, LWHY	UBPS 3510 AS1	PUB 35-7	55	
		LWH..B, LWH..M, LWHG, LWHT..B, LWHT..M, LWHTG	☉		60	
	45	LWHD..B, LWHD..M, LWHDG, LWHY	☉		70	
		LWH..B, LWHG, LWHT..B, LWHTG	☉		70	
55	LWHD..B, LWHDG, LWHY	☉		80		
	LWH..B, LWHG, LWHT..B, LWHTG, LWHD..B, LWHDG, LWHY	☉		90		
LWE	15	LWE..Q, LWET..Q, LWES..Q, LWEC, LWEC..SL, LWE, LWE..SL, LWEG, LWEG..SL, LWETC, LWETC..SL, LWET, LWET..SL; LWETG, LWETG..SL, LWESC, LWESC..SL, LWES, LWES..SL, LWESG, LWESG..SL	☉		24	
		LWE..Q, LWET..Q, LWES..Q, LWEC, LWEC..SL, LWE, LWE..SL, LWEG, LWEG..SL, LWETC, LWETC..SL, LWET, LWET..SL; LWETG, LWETG..SL, LWESC, LWESC..SL, LWES, LWES..SL, LWESG, LWESG..SL	☉		28	
		LWE..Q, LWET..Q, LWES..Q, LWEC, LWEC..SL, LWE, LWE..SL, LWEG, LWEG..SL, LWETC, LWETC..SL, LWET, LWET..SL; LWETG, LWETG..SL, LWESC, LWESC..SL, LWES, LWES..SL, LWESG, LWESG..SL	☉		33	
	30	LWE..Q, LWET..Q, LWES..Q, LWEC, LWEC..SL, LWE, LWE..SL, LWEG, LWEG..SL, LWETC, LWETC..SL, LWET, LWET..SL; LWETG, LWETG..SL, LWESC, LWESC..SL, LWES, LWES..SL, LWESG, LWESG..SL	UBPS 3010 DS1		42	3
		LWE..Q, LWET..Q, LWES..Q, LWEC, LWE, LWETC, LWET, LWESC, LWES	UBPS 3510 DS1		48	6
	45	LWE, LWET, LWES	☉		60	
LRX	15	LRXC, LRX, LRXG, LRXSC, LRXS, LRXSG	☉		24	
		LRXDC, LRXD, LRXDG	☉		28	
	20	LRXC, LRX, LRXG, LRXSC, LRXS, LRXSG	☉		30	
		LRXDC, LRXD, LRXDG	☉		34	
	25	LRXC, LRX, LRXG	☉		36	
		LRXDC, LRXD, LRXDG	☉		40	
	30	LRXC, LRX, LRXG	UBPS 3010 BS1		42	2
		LRXDC, LRXD, LRXDG	UBPS 3010 BS1	PUB 30-3	45	
	35	LRXC, LRX, LRXG	UBPS 3510 BS1		48	5
		LRXDC, LRXD, LRXDG	UBPS 3510 BS1	PUB 35-7	55	
45	LRXC, LRX, LRXG	UBPS 4510 BS1		60	8	
	LRXDC, LRXD, LRXDG	UBPS 4510 BS1	PUB 45-10	70		
ME	25	MEC, ME, MEG, METC, MET, METG	☉		36	
	30	MEC, ME, MEG, METC, MET, METG	☉		42	
	35	MEC, ME, METC, MET	UBPS 3510 DS1		48	6
	45	ME, MET	☉		60	

*1 Only required for high carriage design

*2 Supplements the measure table and datasheet

See page 13 for part number explanation

Type of rail	Size	Type of carriage	Item number	Adapting plate ^{*1} (for height compensation)	Measure D [mm]	Measure table (page 56) ^{*2}
LH	15	LAH..EMZ, LAH..GMZ	☉		24	
		LAH..ANZ, LAH..BNZ	☉		28	
	20	LAH..EMZ, LAH..GMZ, LAH..ANZ, LAH..BNZ	☉		30	
		LAH..EMZ, LAH..GMZ, LAH..ALZ, LAH..BLZ	☉		36	
	25	LAH..ANZ, LAH..BNZ	☉		40	
		LAH..EMZ, LAH..GMZ, LAH..ALZ, LAH..BLZ	UBPS 3004 BS1		42	3
	30	LAH..ANZ, LAH..BNZ	UBPS 3004 BS1	PUB 30-3	45	
		LAH..EMZ, LAH..GMZ, LAH..ALZ, LAH..BLZ	UBPS 3504 BS1		48	6
	35	LAH..ANZ, LAH..BNZ	UBPS 3504 BS1	PUB 35-7	55	
		LAH..EMZ, LAH..GMZ	UBPS 4504 BS1		60	9
45	LAH..ANZ, LAH..BNZ	UBPS 4504 BS1	PUB 45-10	70		
	LAH..EMZ, LAH..GMZ	☉		70		
55	LAH..ANZ, LAH..BNZ	☉		80		
	LAH..EMZ, LAH..GMZ, LAH..ANZ, LAH..BNZ	☉		90		
SH	15	SAH..EMZ, SAH..GMZ	☉		24	
		SAH..ANZ, SAH..BNZ	☉		28	
	20	SAH..EMZ, SAH..GMZ, SAH..ANZ, SAH..BNZ	☉		30	
		SAH..EMZ, SAH..GMZ, SAH..ALZ, SAH..BLZ	☉		36	
	25	SAH..ANZ, SAH..BNZ	☉		40	
		SAH..EMZ, SAH..GMZ, SAH..ALZ, SAH..BLZ	UBPS 3004 BS1		42	3
	30	SAH..ANZ, SAH..BNZ	UBPS 3004 BS1	PUB 30-3	45	
		SAH..EMZ, SAH..GMZ, SAH..ALZ, SAH..BLZ	UBPS 3504 BS1		48	6
	35	SAH..ANZ, SAH..BNZ	UBPS 3504 BS1	PUB 35-7	55	
		LY..EL, LY..FL, LY..AL	☉		24	
15	LY..AN	☉		28		
	LY..EL, LY..FL, LY..GL, LY..HL, LY..AL, LY..BL	☉		30		
20	LY..EL, LY..FL, LY..GL, LY..HL, LY..AL, LY..BL	☉		36		
	LY..AN, LY..BN	☉		40		
25	LY..EL, LY..FL, LY..GL, LY..HL, LY..AL, LY..BL	UBPS 3004 CS1		42	3	
	LY..AN, LY..BN	UBPS 3004 CS1	PUB 30-3	45		
30	LY..EL, LY..FL, LY..GL, LY..HL, LY..AL, LY..BL	UBPS 3504 CS1		48	6	
	LY..AN, LY..BN	UBPS 3504 CS1	PUB 35-7	55		
35	LY..EL, LY..FL, LY..GL, LY..HL, LY..AL, LY..BL	UBPS 4504 CS1		60	9	
	LY..AN, LY..BN	UBPS 4504 CS1	PUB 45-10	70		
RA	15	RA..AL, RA..BL, RA..EM, RA..GM	☉		24	
		RA..AN, RA..BN	☉		28	
	20	RA..EM, RA..GM, RA..AN, RA..BN	☉		30	
		RA..AL, RA..BL, RA..EM, RA..GM	☉		36	
	25	RA..AN, RA..BN	☉		40	
		RA..AL, RA..BL, RA..EM, RA..GM	☉		42	
	30	RA..AN, RA..BN	☉		45	
		RA..AL, RA..BL, RA..EM, RA..GM	UBPS 3504 FS1		48	5
	35	RA..AN, RA..BN	UBPS 3504 FS1	PUB 35-7	55	
		RA..AL, RA..BL, RA..EM, RA..GM	UBPS 4504 FS1		60	8
45	RA..AN, RA..BN	UBPS 4504 FS1	PUB 45-10	70		
	RA..AL, RA..BL, RA..EM, RA..GM	☉		70		
55	RA..AN, RA..BN	☉		80		
	RA..EM, RA..GM, RA..AN, RA..BN	☉		90		
LS	15	LAS..KLZ, LAS..JMZ, LAS..EMZ, LAS..CLZ, LAS..ALZ	☉		24	
		LAS..KLZ, LAS..JMZ, LAS..EMZ, LAS..CLZ, LAS..ALZ	☉		28	
	20	LAS..KLZ, LAS..JMZ, LAS..EMZ, LAS..CLZ, LAS..ALZ	☉		33	
		LAS..KLZ, LAS..FLZ, LAS..ELZ, LAS..CLZ, LAS..ALZ	UBPS 3004 AS1		42	3
	35	LAS..KLZ, LAS..FLZ, LAS..ELZ, LAS..CLZ, LAS..ALZ	UBPS 3504 AS1		48	6
SS	15	SAS..KLZ, SAS..EMZ, SAS..CLZ, SAS..ALZ	☉		24	
		SAS..KLZ, SAS..EMZ, SAS..CLZ, SAS..ALZ	☉		28	
	20	SAS..KLZ, SAS..EMZ, SAS..CLZ, SAS..ALZ	☉		33	
		SAS..KLZ, SAS..EMZ, SAS..CLZ, SAS..ALZ	UBPS 3004 AS1		42	3
	35	SAS..KLZ, SAS..EMZ, SAS..CLZ, SAS..ALZ	UBPS 3504 AS1		48	6

Rail manufacturer

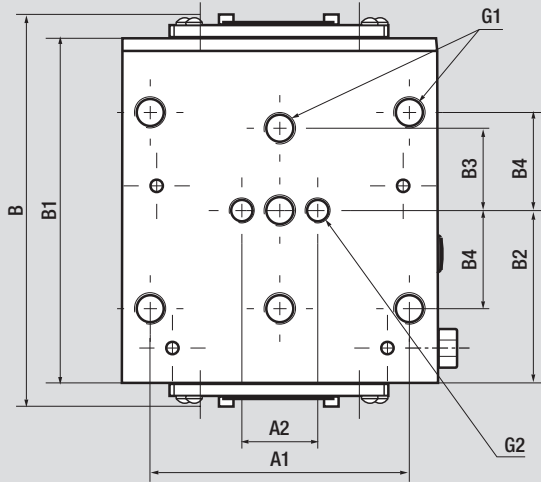
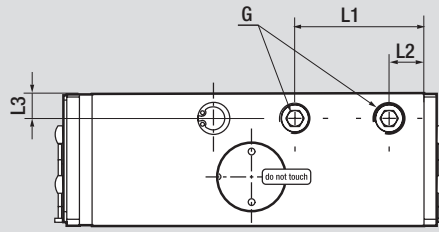
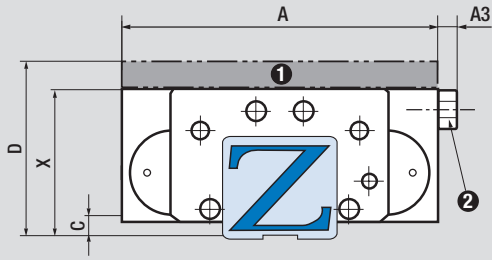
NSK

UB

^{*1} Only required for high carriage design

^{*2} Supplements the measure table and datasheet

See page 13 for part number explanation



Note: Consider measurement C!

Comment:

The air filter is not necessary if the PLUS-connection is being used. Air connections are located on both sides and can be exchanged according to mounting requirements. Only one connection is necessary for function.

- ❶ Adapter plate PUB (accessories)
- ❷ air filter

Measure table	Holding power [N] UB	Holding power [N] UB PLUS	A [mm]	A1 [mm]	A2 [mm]	A3 [mm]	B [mm]	B1 [mm]	B2 [mm]	B3 [mm]	B4 [mm]	C	X [mm]	G	G1	G2	L1 [mm]	L2 [mm]	L3 [mm]
1	1.850	2.650	70	57	20	5	max.123	99	49,5	20	22,5	5	36	M5	M8/7	M6/7	34,3	11	6,5
2	2.500	3.300	90	72	22	5	max.134	109	54,5	22	26	5	42	M5	M10/8	M8/8	40,8	11	6,5
3	1.850	2.650	90	72	22	5	max.134	109	54,5	22	26	5	42	M5	M10/8	M8/8	40,8	11	6,5
4	7.700	9.200	140	116	-	6	max.158	139	69,5	35	47,5	10	70	1/8"	M14/14	-	65	37,5	12
5	2.800	3.800	100	82	24	6	max.136	108	54,5	26	31	6	48	1/8"	M10/10	M8/10	40,8	11	8
6	2.500	3.300	100	82	24	6	max.134	108	54,5	26	31	6	48	1/8"	M10/10	M8/10	40,8	11	8
7	2.500	3.300	100	-	24	6	max.124	109	54,5	-	31	5,5	44	1/8"	M10/10	M8/10	40,8	11	7
8	3.700	4.800	120	100	26	6	max.141	117	58,5	30	40	8	60	1/8"	M12/12	M10/12	48,8	31,5	12
9	2.800	3.800	120	100	26	6	max.130	109	54,5	30	40	8	60	1/8"	M12/12	M10/12	45	28	8
10	2.800	3.800	120	-	26	6	max.130	109	54,5	40	-	7	52	1/8"	M12/12	M10/12	84	25	7