

Rail manufacturer



Type of rail	Size	Type of carriage	Item number	Measure table [page 94]
<b>HSR</b>	35	HSR..A, HSR..LA, HSR..B, HSR..LB, HSR..CA, HSR..HA, HSR..CB, HSR..HB	KBHS 3501 AS1A	1
	45	HSR..A, HSR..LA, HSR..B, HSR..LB, HSR..CA, HSR..HA, HSR..CB, HSR..HB	KBHS 4501 AS1A	2
	55	HSR..A, HSR..LA, HSR..B, HSR..LB, HSR..CA, HSR..HA, HSR..CB, HSR..HB	☉	
	65	HSR..A, HSR..LA, HSR..B, HSR..LB, HSR..CA, HSR..HA, HSR..CB, HSR..HB	KBHS 6501 AS1A	3
<b>NR/NRS</b>	35	NR / NRS..A, NR / NRS..LA, NR / NRS..B, NR / NRS..LB	☉	
	45	NR / NRS..A, NR / NRS..LA, NR / NRS..B, NR / NRS..LB	☉	
	55	NR / NRS..A, NR / NRS..LA, NR / NRS..B, NR / NRS..LB	☉	
	65	NR / NRS..A, NR / NRS..LA, NR / NRS..B, NR / NRS..LB	☉	
<b>SHS</b>	35	SHS..C, SHS..LC	KBHS 3501 CS1A	1
	45	SHS..C, SHS..LC	KBHS 4501 CS1A	2
	55	SHS..C, SHS..LC	☉	
	65	SHS..C, SHS..LC	KBHS 6501 CS1A	3
<b>SRG</b>	35	SRG..C, SRG..LC	KBHS 3501 ES1A	1
	45	SRG..C, SRG..LC	KBHS 4501 ES1A	2
	55	SRG..C, SRG..LC	☉	
	65	SRG..LC	KBHS 6501 ES1A	3
<b>SNR/SNS</b>	35	SNR..C, SNR..LC, SNS..C, SNS..LC	☉	
	45	SNR..C, SNR..LC, SNS..C, SNS..LC	☉	
	55	SNR..C, SNR..LC, SNS..C, SNS..LC	☉	
	65	SNR..C, SNR..LC, SNS..C, SNS..LC	☉	

Rail manufacturer



<b>1605, 1607, 1645, 1647</b>	35	1631, 1651, 1653, 1661, 1665	KBHS 3505 AS1A	1
	45	1651, 1653	KBHS 4505 AS1A	2
	55	1651, 1653	☉	
	65	1651, 1653	KBHS 6505 AS1A	3
<b>1805, 1807</b>	35	1851, 1853	KBHS 3505 BS1A	1
	45	1851, 1853	KBHS 4505 BS1A	2
	55	1851, 1853	☉	
	65	1853	KBHS 6505 BS1A	2

Rail manufacturer



<b>MR</b>	35	MR..A, MR..B	KBHS 3503 AS1A	1
	45	MR..A, MR..B	KBHS 4503 AS1A	2
	55	MR..A, MR..B	☉	
	65	MR..B	KBHS 6503 AS1A	3

Rail manufacturer



<b>LWH</b>	35	LWH..B, LWH..M, LWHG, LWHT..B, LWHT..M, LWHTG	☉	
	45	LWH..B, LWH..M, LWHG, LWHT..B, LWHT..M, LWHTG	☉	
	55	LWH..B, LWHG, LWHT..B, LWHTG	☉	
	65	LWH..B, LWHG, LWHT..B, LWHTG	☉	
<b>LRX</b>	35	LRXC, LRX, LRXG	KBHS 3510 BS1A	1
	45	LRXC, LRX, LRXG	KBHS 4510 BS1A	2
	55	LRXC, LRX, LRXG	☉	
	65	LRXC, LRX, LRXG	KBHS 6510 BS1A	3

See page 13 for part number explanation

Type of rail	Size	Type of carriage	Item number	Measure table [page 94]
<b>TKSD</b> (KUSE)	35	KWSE, KWSE..-L	KBHS 3502 AS1A	1
	45	KWSE, KWSE..-L	KBHS 4502 AS1A	2
	55	KWSE, KWSE..-L	☉	
<b>TKVD</b> (KUVE)	35	KWVE..-B, KWVE..-B-L, KWVE..-B-KT, KWVE..-B-KT-L, KWVE..-E, KWVE..-B-EC	KBHS 3502 BS1A	1
	45	KWVE..-B, KWVE..-B-L, KWVE..-B-KT, KWVE..-B-KT-L, KWVE..-E, KWVE..-B-EC	KBHS 4502 BS1A	2
	55	KWVE..-B, KWVE..-B-L, KWVE..-B-KT, KWVE..-B-KT-L	☉	
<b>TSX -E</b> (RUE)	35	RWU..-E, RWU..-E-L, RWU..-E-KT-L	KBHS 3502 DS1A	1
	45	RWU..-E, RWU..-E-L, RWU..-E-KT-L	KBHS 4502 DS1A	2
	55	RWU..-E, RWU..-E-L, RWU..-E-KT-L	☉	
	65	RWU..-E, RWU..-E-L	KBHS 6502 DS1A	3

Rail manufacturer



<b>LH</b>	35	LAH..EMZ, LAH..GMZ	KBHS 3504 BS1A	1
	45	LAH..EMZ, LAH..GMZ	KBHS 4504 BS1A	2
	55	LAH..EMZ, LAH..GMZ	☉	
	65	LAH..EMZ, LAH..GMZ	KBHS 6504 BS1A	3
<b>LS</b>	35	LAS..KLZ, LAS.. FLZ, LAS..ELZ	KBHS 3504 AS1A	1
<b>LY</b>	35	LY..EL, LY..FL, LY.. GL, LY.. HL	☉	
	45	LY..EL, LY..FL, LY.. GL, LY.. HL	☉	
	55	LY..EL, LY..FL, LY.. GL, LY.. HL	☉	
	65	LY..EL, LY..FL, LY.. GL, LY.. HL	☉	
<b>LA</b>			x	
<b>RA</b>	35	RA..EM, RA..GM	KBHS 3504 FS1A	1
	45	RA..EM, RA..GM	KBHS 4504 FS1A	2
	55	RA..EM, RA..GM	☉	
	65	RA..EM, RA..GM	KBHS 6504 FS1A	3

Rail manufacturer



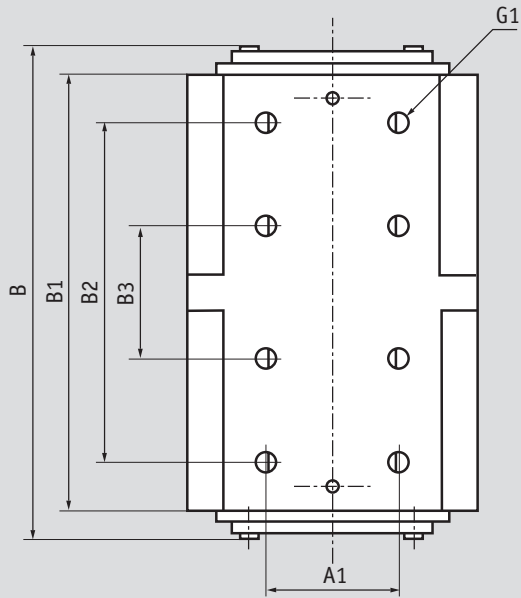
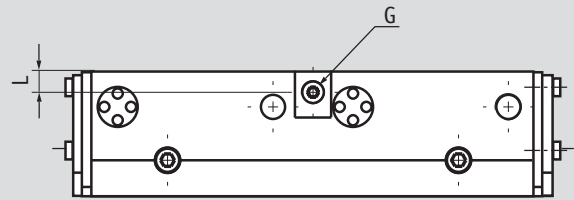
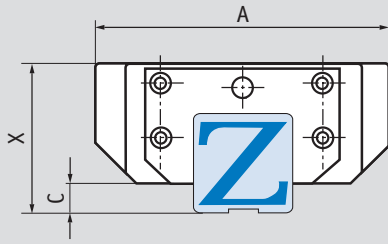
<b>LGR..T</b> <b>LGR..R</b>	35	LGW..CC, LGW..HC	☉	
	45	LGW..CC, LGW..HC	☉	
	55	LGW..CC, LGW..HC	☉	
	65	LGW..CC, LGW..HC	☉	
<b>HGR..T</b> <b>HGR..R</b>	35	HGW..CC, HGW..HC	KBHS 3512 ES1A	1
	45	HGW..CC, HGW..HC	KBHS 4512 ES1A	2
	55	HGW..CC, HGW..HC	☉	
	65	HGW..CC, HGW..HC	KBHS 6512 ES1A	3
<b>RG..T</b>	35	RGW..CC, RGW..HC	☉	
	45	RGW..CC, RGW..HC	☉	
	55	RGW..CC, RGW..HC	☉	

Rail manufacturer



x: Not feasible

See page 13 for part number explanation



**Note:** Consider measurement C!

Comment:  
G: The hydraulic connection is available on either side.

Only one connection is necessary for function.  
Return line pressure < 1.5 bar.

Measure table	Holding power [N] KBHS	max. operating pressure [bar]	A [mm]	A1 [mm]	B max. [mm]	B1 [mm]	B2 [mm]	B3 [mm]	C [mm]	X [mm]	G	G1	L [mm]
1	7.500	150	100	41	182	155	122	46	6	48	1/8"	M8/15	9
2	9.000	150	120	55	210	180	140	55	8	60	1/8"	M10/19,3	9
3	16.000	150	170	70	300	270	205	80	11,5	90	1/4"	M16/29,3	11